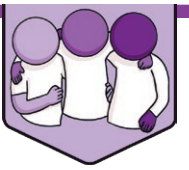




Your friend has her top on the wrong way. Should you tell her? If so, how?



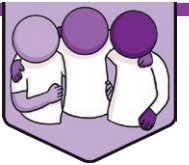
Your friend has accidentally drawn on his face with pen while working. Should you tell him? If so, how?



This resource is fully in line with the Learning Outcomes and Core Themes outlined in the PSHE Association [Programme of Study](#).



You don't like the colour of your friend's top. Should you tell them? If so, how?



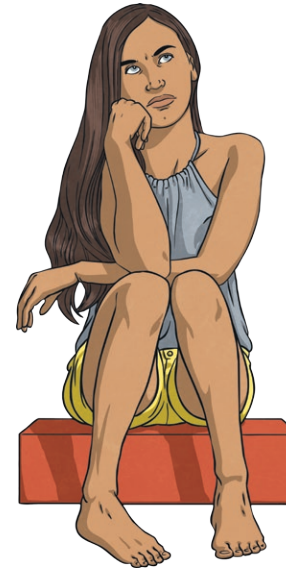
Your friend has said something to another friend and you think the words said were unkind. Would you express your opinion? If so, how?



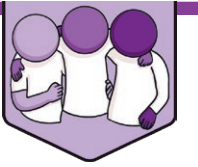
A friend says they think it is OK to drop litter. You disagree. Would you say what you thought? If so, how?



[twinkl.com](https://www.twinkl.com)



You disagree with an opinion your best friend shares about your favourite sports team. How would you let them know what you thought?



[twinkl.com](https://www.twinkl.com)