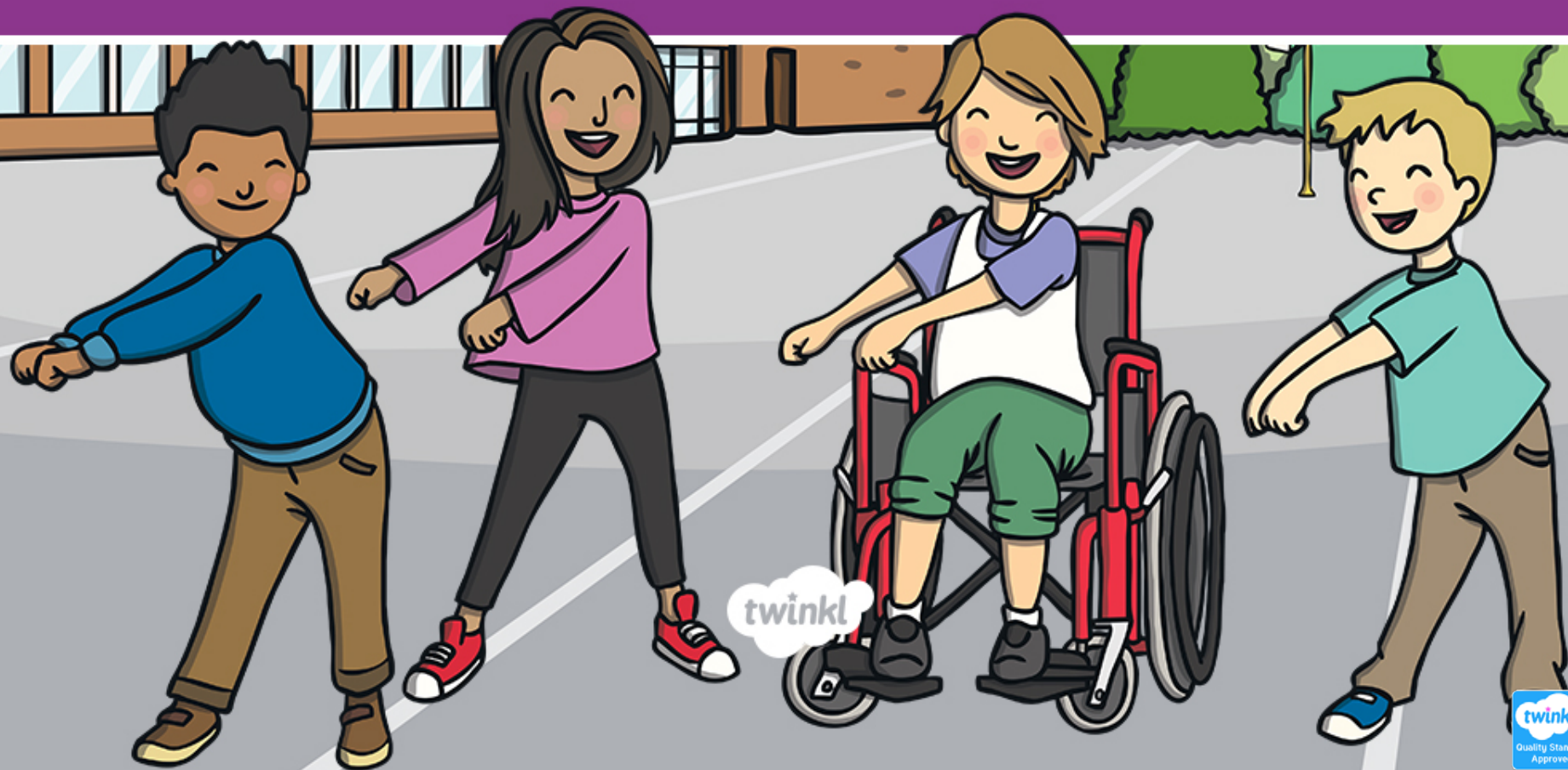




PSHE and Citizenship

Relationships | TEAM

Together Everyone Achieves More



Aim

- I can talk about the teams I belong to.

Success Criteria

- I can say what makes a team special.
- I can say how it feels to be part of a team.

The Big Questions

The Big Questions



What teams are
we a part of?

What does it
mean to be
part of a team?



Reconnecting

Teams



What does the word **team** mean?

A team is a group of people
who work together.



Teams



Together

Everyone

Achieves

More

What do you
think this
means?

This means that, when we work as a team, we can do things that we are not able to do on our own.



Teams



Do you belong to any teams or groups?



One of the first
teams we belong
to is our family.

Teams



Here is the family of the three bears from Goldilocks and the Three Bears.
They are a good team.



Who else might be on the Bears' team?

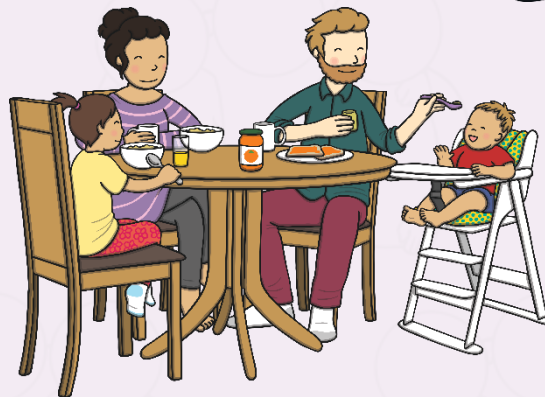
The background of the slide is a solid purple color. It features a repeating pattern of stylized, white line-art figures. Each figure is composed of a circle for the head and a rounded, open-bottom shape for the torso. The figures are arranged in a grid-like fashion, with some appearing to be in motion or interacting. The central text 'Exploring' is written in a large, bold, black sans-serif font, centered horizontally and vertically on the slide.

Exploring

Family Teams



Families are important teams that we all belong to. All families are different but all families love and care for each other. It is important to look out for others in your team, spend time together and help each other out when things get tough.



Belonging



What teams are you a part of?

Can everyone be a
member of every team?
Why?

How do we know we are
part of a team?



Belonging



Sometimes, we might wear something special that shows we are part of a team. Or we might have a special symbol that shows us, like our school logo. Other times, we might just know, because the people in our team help us and make us feel like we belong.



Belonging



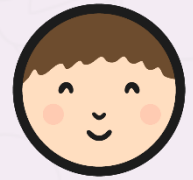
What does it mean to be part of a team?

How does it feel to be part
of a team?

Why is being part of a
team a good thing?



Where I Belong



Draw the teams that you belong to, and write a word or two to describe how they make you feel.

Where I Belong

In the shapes below, can you draw the different teams you belong to?

Keywords:

Rainbows
school

family
Church

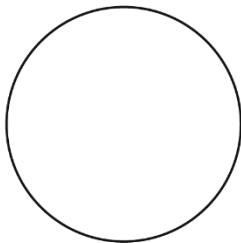
swimming
drama club

Beavers
gymnastics

Mosque
dance

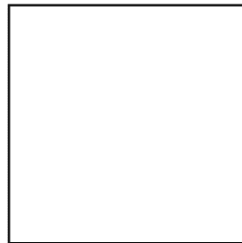
football
rugby

class band
Temple



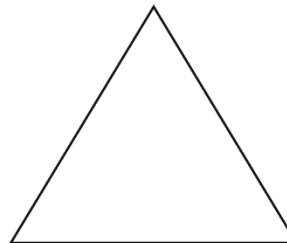
Team: _____

Feeling: _____



Team: _____

Feeling: _____



Team: _____

Feeling: _____



PSHE and Citizenship | Year 1 | Relationships | TEAM | Together Everyone Achieves More | Lesson 1

visit [twinkl.com](https://www.twinkl.com)

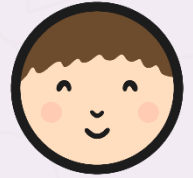


Consolidating

Reflecting

Consolidating

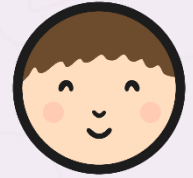
My Team



We might be on lots of teams, but just like the three bears, we all have our very own team of special people who help us and make us feel like we belong. Anyone can be a part of this team, if they are important to you.



My Team



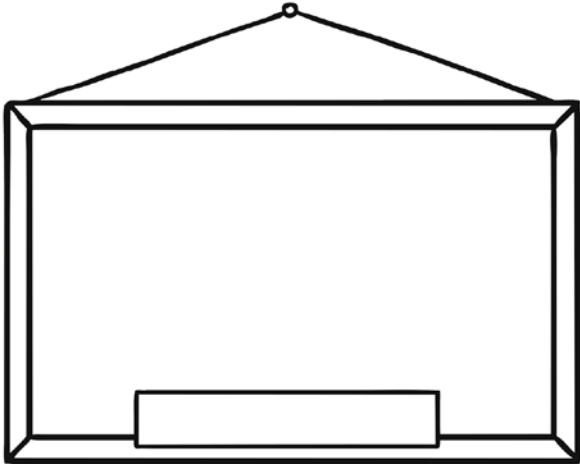
Some people have lots of people in their team, some people have only a few. The number of people doesn't matter. Everyone's team is different. All teams are special.

Draw your special team and write a sentence to say how they make you feel.

My Team

I can talk about the teams I belong to.

Draw your team and label the people. Give your team a name.



Why are your team special to you?

This resource is fully in line with the Learning Outcomes and Core Themes outlined in the PSHE Association [Resources of Choice](https://www.pshe.org.uk/)

twinkl PSHE and Citizenship | Year 1 | Relationships | TEAM | Together Everyone Achieves More | Lesson 1 visit [twinkl.com](https://www.twinkl.com)

The background of the slide is a solid purple color. It features a repeating pattern of stylized, white line-art figures. Each figure is composed of a circle for the head and a rounded, open-bottom shape for the torso. The figures are arranged in a grid-like fashion, with some appearing to be in motion or interacting. The central text is a large, bold, black word.

Reflecting

Feelings of Belonging



What words have you written to explain how it feels to be part of a team?

Why is it good to be a part of a team?



What does this mean: Together Everyone Achieves More?

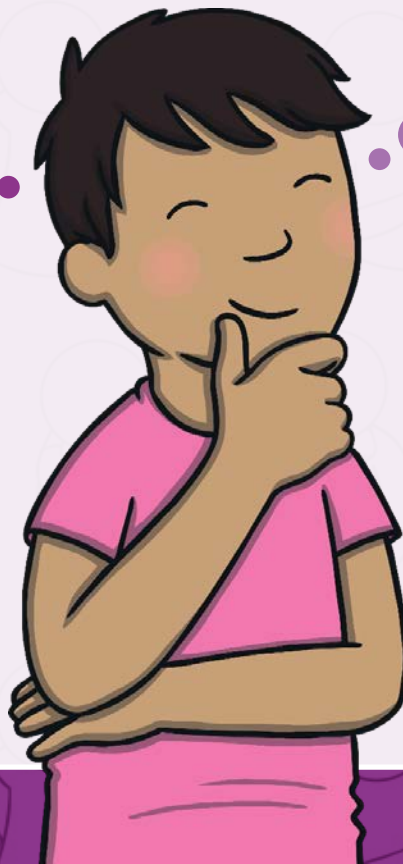
The Big Questions

The Big Questions



What teams are
we a part of?

What does it
mean to be
part of a team?



Have your
answers
changed at all
from the
beginning of
this lesson?

Aim

- I can talk about the teams I belong to.

Success Criteria

- I can say what makes a team special.
- I can say how it feels to be part of a team.

